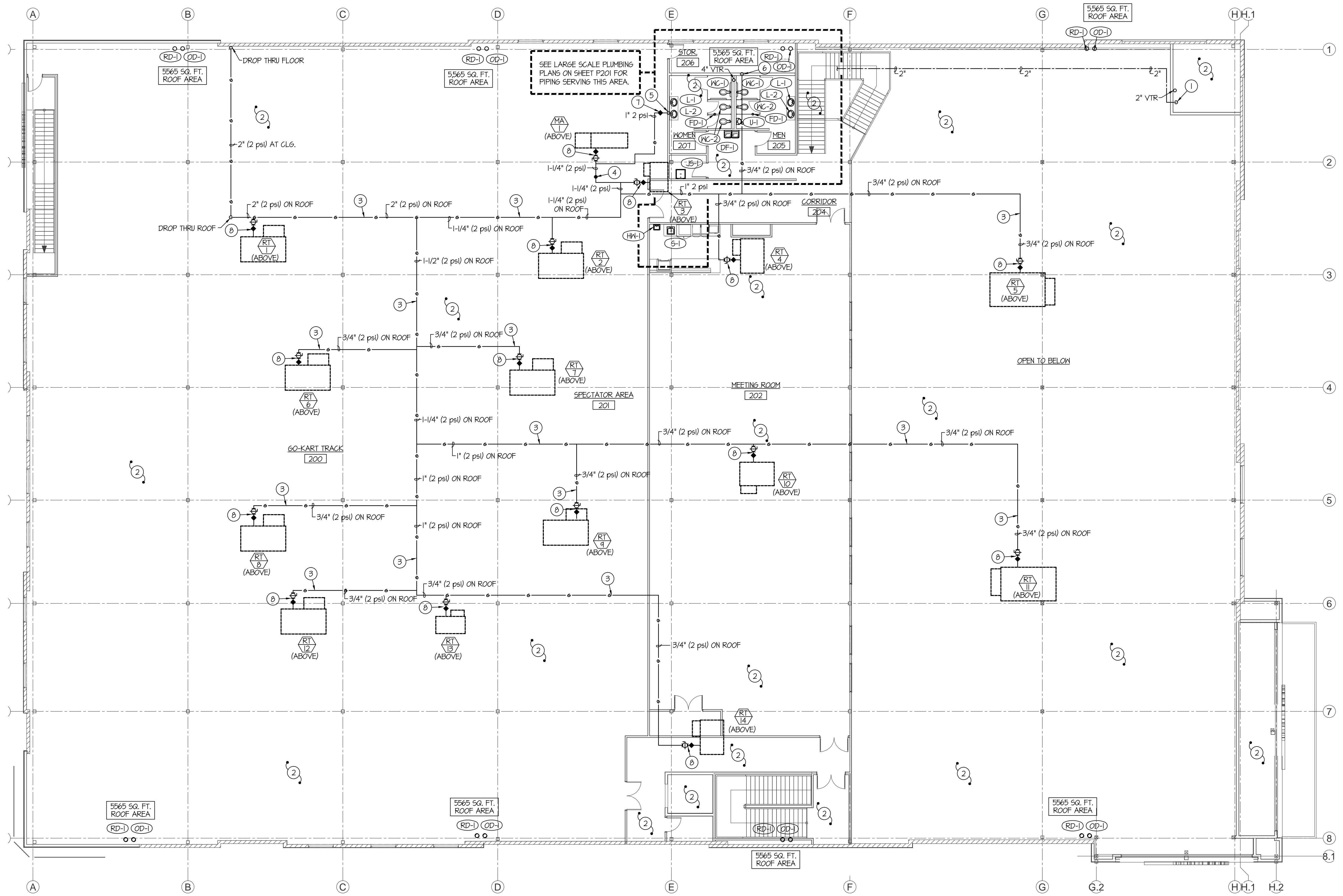


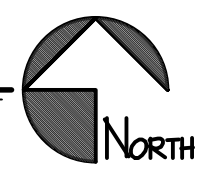


PLAN NOTES:

- ① 2" CN MAIN UP FROM RISER ROOM BELOW. SEE SHEET P101 FOR CONTINUATION OF PIPING.
- ② INSTALL FIRE SPRINKLER PIPING AND HEADS AS PER NFPA 13 CODE REQUIREMENTS THROUGHOUT ENTIRE BUILDING.
- ③ INSTALL ALL GAS PIPING ON PILLON BLOCKS SIMILAR TO ERIGO PIPE PIER SUPPORTS AT 10'-0" ON CENTER.
- ④ INSTALL EMERGENCY SOLENOID GAS VALVE ON GAS LINE FEEDING MAKE-UP AIR UNIT MA-1 AND ALL GAS PIPING DROPPING DOWN TO SERVE KITCHEN EQUIPMENT BELOW.
- ⑤ DROP 1-1/2" (2 PSI) GAS LINE DOWN IN WALL TO SERVE GAS FIRED KITCHEN EQUIPMENT ON MAIN LEVEL BELOW. SEE LARGE SCALE PIPING PLAN ON SHEET P200 FOR CONT. OF GAS PIPING.
- ⑥ DROP 3/4" (2 PSI) GAS LINE DOWN THRU ROOF INTO WALL CAVITY TO MAIN LEVEL BELOW TO SERVE WATER HEATER WH-1 (SEAL ROOF PENETRATION WEATHERTIGHT). SEE LARGE SCALE PLUMBING PLAN ON SHEET P200 FOR CONNECTION TO WATER HEATER.
- ⑦ INSTALL 2 PSI TO OZ. REGULATOR ON 1" (2 PSI) GAS LINE SERVING KITCHEN EQUIPMENT BELOW.
- ⑧ INSTALL 2 PSI TO OZ. REGULATOR ON 3/4" (2 PSI) GAS LINE SERVING UNIT. SIZE REGULATOR FOR BTU LOAD OF ACTUAL EQUIPMENT SUPPLIED. CONNECT 3/4" (2 PSI) GAS LINE TO EQUIPMENT COMPLETE WITH SHUT-OFF VALVE, FLEXIBLE CONNECTION AND DIRT LEG. SEE DETAIL ON SHEET P300.



UPPER LEVEL PLUMBING FLOOR PLAN
SCALE: 3/32" = 1'-0"



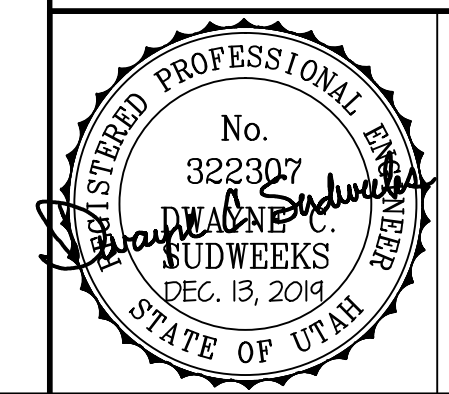
SEAL:

REV	DATE	DESCRIPTION

New Building For:
THE RUSH FUNFLEX
JORDAN LANDING
WEST JORDAN CITY, UTAH 84084

PROJECT:
UPPER LEVEL PLUMBING FLOOR PLAN
PROJECT:

SHEET NUMBER:
P102
DO NOT SCALE DRAWING



Engineered Systems Associates
1355 EAST CENTER
POCATELLO, IDAHO 83201
PHONE: (208) 233-0501
FAX: (208) 233-0529
EMAIL: eso@engsystems.com
ESA JOB NUMBER: 19014

MOUNTAIN WEST ARCHITECTURE 150 25TH STREET - OGDEN, UT 84401 | PH: 801-368-8052 | WWW.MOUNTAINWESTARCHITECTURE.COM